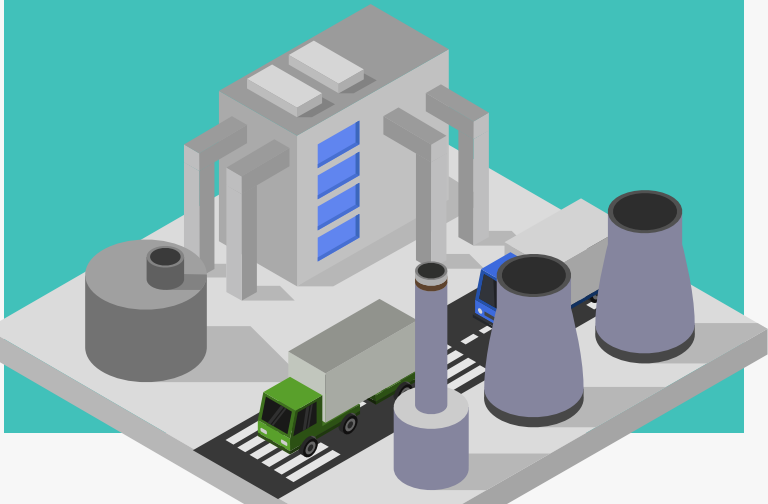


INTERNATIONAL UNDERGRADUATE TRACK

Established in 1971, Industrial Engineering at ITB is the oldest and the first ABET-accredited (since 2010) industrial engineering education institution in Indonesia.

International Undergraduate Program was established in 2022 to ensure the competitiveness of our graduates in the increasingly global engineering job market. The track has the same quality of education with the regular class in ITB's Ganesha campus with mandatory international exposure for at least one semester.



International Track in INDUSTRIAL ENGINEERING — Undergraduate

CONTACT US


INDUSTRIAL ENGINEERING PROGRAM
FACULTY OF INDUSTRIAL TECHNOLOGY
INSTITUT TEKNOLOGI BANDUNG

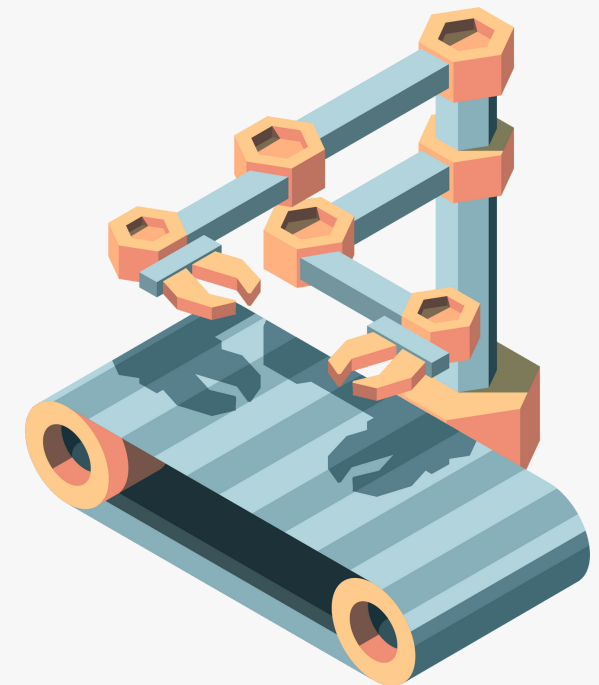
Gedung Matthias Aroef
Laboratorium Tekniknologi III
Jalan Ganesha 10 Bandung 40132
Phone: +62-22-2504189
WhatsApp: +62-81-990-134-144
Email : ti@itb.ac.id
Web : www.ti.fti.itb.ac.id/en

FOLLOW US ON SOCIAL MEDIA

 [@ti.itb](https://www.instagram.com/ti.itb)

 [/ti.itb](https://www.linkedin.com/company/ti.itb)

 [bit.ly/YoutubeTIITB](https://www.youtube.com/channel/UCIITB)

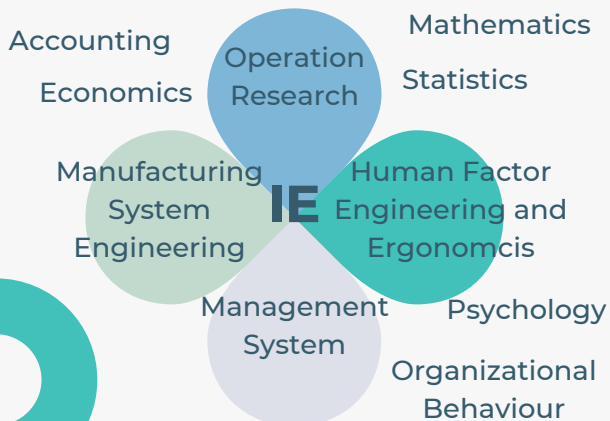




WHAT IS INDUSTRIAL ENGINEERING?

Industrial engineering is a field of engineering that focuses on optimizing complex systems and processes in order to improve the efficiency and productivity of businesses and organizations. Industrial engineers use various tools and techniques to analyze operations, identify areas for improvement, and implement solutions to increase efficiency.

BODY OF KNOWLEDGE

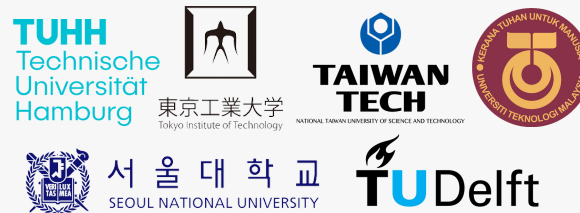


CURRICULUM

Year	Course Content
First Year: Foundation	Basic science, liberal arts, & principles of general engineering
Second Year: Basic Skill	Fundamentals of industrial engineering methodology
Third Year: Study Program	More advanced industrial engineering subjects
Fourth Year: Final	Capstone project & engineering design

PARTNER

UNIVERSITIES



and 100+ partner universities in all around the globe through

- SEA (Semester Exchange Abroad),
- GE3 (Global Engineering Education Exchange),
- IISMA (International Indonesian Students Mobility Award),
- and other internationalization schemes

bit.ly/ITBSemExchange

ADMISSION

Requirements

- English proficiency: TOEFL (min. 61), IELTS (min. 5.5), or ITB ELPT (min. 92)
- International educational qualification certificate, e.g. General SAT or ITB Academic Qualification Test
- High School (or equivalent) report/transcript commending high academic achievement upon graduation

Schedule

- First Period: February - April
 - Second Period: May - June
- Specific date subject to change each year. Check the website for detailed information.

admission.itb.ac.id

CAREER PROSPECTS

- Production Engineer
- Quality Engineer
- Safety Engineer
- Systems Analyst
- Business Development & Analyst
- Data Scientist
- Organization & Human Capital Specialist
- Project Manager
- Corporate Planning Specialist
- Consultant
- Marketing System Specialist
- Logistics & Procurement Specialist
- User Experience & Interface Specialist
- Human Factors & Ergonomics Specialist
- Product Developer
- Etc.